

WELCOME HOME!

JONESBORO ARKANSAS



JONESBORO
UNLIMITED

WELCOME

Welcome to Jonesboro, Arkansas, where urban excitement meets rural charm in the heart of Northeast Arkansas! With a population of over 80,000, we're big enough to offer all the amenities you need, yet small enough for that neighborly feel. Our city boasts a resilient economy that's been steadily growing for over 50 years, serving as the economic hub for over 15 counties in the region.

But it's not just about business here – we're all about family and quality of life. From abundant recreational opportunities to vibrant cultural attractions, Jonesboro is a place where you can thrive both personally and professionally.

And let's talk location – just an hour's drive from downtown Memphis, we're close enough to enjoy the perks of a major metropolitan area without the hassle of big-city traffic.

Relocating is a big step, and we're here to make the transition as smooth as possible. Our team is dedicated to helping you feel welcome and supported every step of the way. Your success in our community matters to us, and we can't wait to show you all that Jonesboro has to offer. Welcome home!





LIVING

The Perfect Home

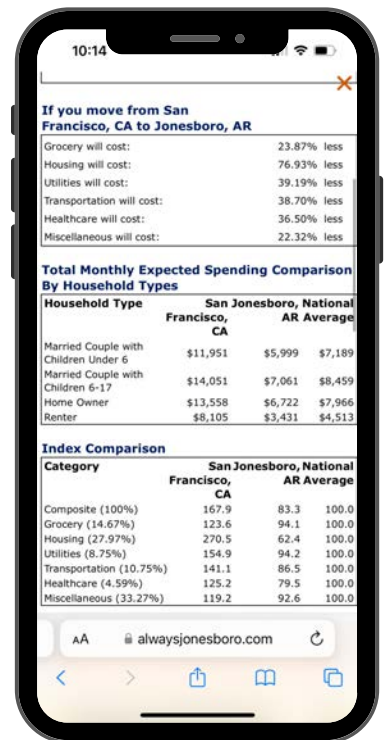
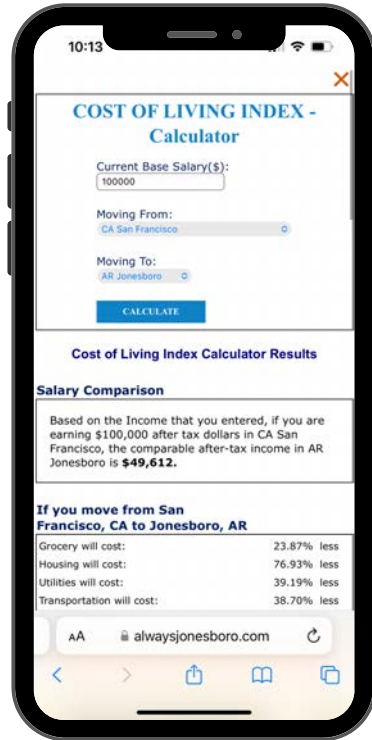
From the West End to Sage Meadows, Jonesboro has legacy homes ready for an update and newly constructed homes on the golf course. Whether you want to listen to the nightlife from a downtown loft or sit back in a quiet, established neighborhood, Jonesboro has the home that's perfect for you.

SCAN FOR
LIST OF
JONESBORO
REAL
ESTATE
AGENTS



COST OF LIVING CALCULATOR

Discover how your current income stretches in Jonesboro compared to your current city. Simply input your income and living expenses to see a detailed cost comparison across key areas such as housing, utilities, groceries, and transportation.



[CALCULATE NOW](#)



ALWAYS
LIVING



COMMUTE BLISS

A dream commute.
No rush required.



Getting around the city is incredibly convenient in Jonesboro, making it a stress-free experience for residents. With a typical commute averaging just over 15 minutes, you'll find yourself spending more time doing what you love rather than being stuck in traffic. Whether you're heading to work, running errands, or meeting up with friends, the short travel times allow you to make the most of your day. Imagine reclaiming hours each week that would otherwise be wasted behind the wheel—time you can dedicate to your family, hobbies, or simply relaxing. In Jonesboro, life is designed for living, not just getting from one place to another.



AVERAGE COMMUTE TIMES*

Jonesboro 17.8

U.S. Average 26.6

Nashville, TN 24.8

Dallas, TX 26.4

*Commute times available at www.census.gov

aj always jonesboro

The Always Jonesboro initiative is a dynamic effort by Jonesboro Unlimited to attract and retain top-skilled job seekers by showcasing the vibrant quality of life in Jonesboro, Arkansas. Through engaging digital content, including Instagram and Facebook, as well as a comprehensive website, Always Jonesboro highlights the city's best features—exceptional job opportunities, diverse recreational amenities, a thriving arts and culture scene, and a welcoming, inclusive community.



Live



Work

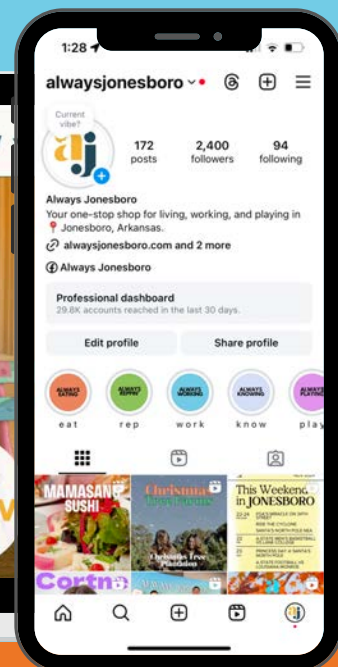
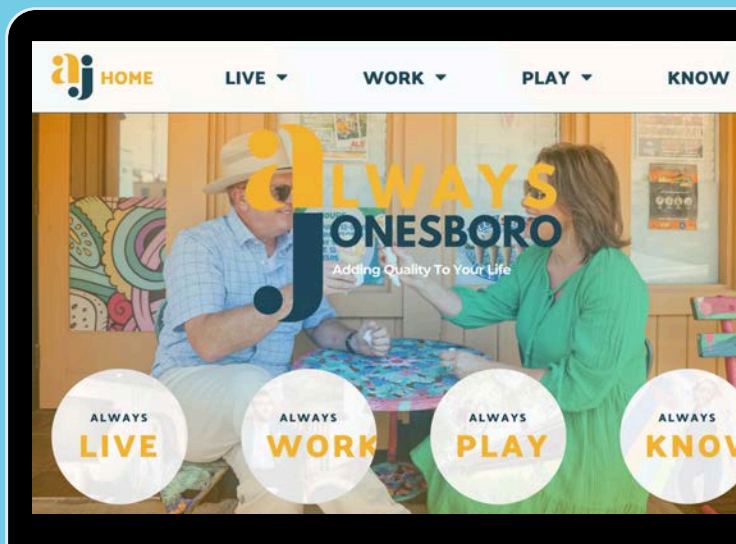


Play



Eat

Always Jonesboro helps you see why this city is the perfect place to live, work, and play. With resources tailored to professionals, new residents, and families, the initiative fosters a sense of belonging and empowers you to make Jonesboro your home.



DINING

Boasting a vibrant dining scene, Jonesboro offers a variety of homegrown restaurants like **JTown's Grill**, **Native Brew Works**, **The Parsonage**, and **501 Steakhouse**. Check out **Lemonade House Grille**, **The Porch at Huntington Square**, and **The Social** for a lively atmosphere. Craving international flavors? **Bamboo**, **Monarca's Mexican**, and **Rice Box** deliver delicious global cuisine. Whether you're in the mood for an upscale experience or a relaxed hangout, Jonesboro has something to satisfy every taste!



SCAN FOR A
COMPLETE LIST
OF RESTAURANTS



OUTDOORS

Jonesboro offers a wide range of outdoor activities for everyone! **Craighead Forest Park** covers 692 acres and features a 60-acre lake with kayak rentals, biking and running trails, disc golf, sports courts, playgrounds, and a splash pad. Located ten miles north of downtown Jonesboro, **Lake Frierson State Park** provides additional recreational opportunities, including fishing, hiking trails, picnic areas, and pedal boat rentals. For nature enthusiasts, the **Crowley's Ridge Nature Center** highlights the unique landscape of Crowley's Ridge through various indoor and outdoor exhibits. Additionally, Jonesboro is actively developing new **biking and walking paths**, making the city more accessible and pedestrian-friendly for both residents and visitors!

ARTS & CULTURE

Jonesboro offers a vibrant arts and culture scene with various performances and exhibitions. The **Arkansas State University Museum**, one of just four accredited museums in the state, highlights the history of Crowley's Ridge and the Lower Mississippi River Valley. **The Fowler Center** hosts visiting musicians, bands, orchestras, opera concerts, and productions. The **Bradbury Art Museum** showcases contemporary art featuring regional, national, and international artists. Historic Downtown's **Forum Theatre** is home to The Foundation of Arts, offering community theatre productions and arts classes. Finally, the **Delta Symphony Orchestra**, the only professional symphony in Northeast Arkansas, enriches the region with high-quality symphonic music and concerts.



HEALTHCARE

Jonesboro is the regional healthcare hub for Northeast Arkansas, featuring top-tier medical facilities such as **NEA Baptist Memorial Hospital** and **St. Bernards Medical Center**. The city offers a wide range of specialized care, including numerous clinics for general healthcare, family counseling, and dental care, ensuring comprehensive services for all residents. Jonesboro is also home to the **New York Institute of Technology College of Osteopathic Medicine** at Arkansas State University, which enhances the city's medical resources and educational opportunities.



SCAN FOR A
COMPLETE
HEALTHCARE
DIRECTORY





CAMPUS LIFE

Located in the heart of Jonesboro, Arkansas State University is the cornerstone of the city's vibrant community. Established in 1909, A-State is a dynamic, student-centered institution with a current enrollment of 16,687 students. It offers a blend of academic excellence, cultural enrichment, and athletic pride. The sprawling, 1,376-acre campus is a hub of activity, drawing both students and residents for a variety of events, programs, and community engagement.

Arkansas State University is the second-largest university in Arkansas and offers a wide range of academic and research programs, from business and engineering to health sciences and the arts. A-State is also expanding with the upcoming A-State College of Veterinary Medicine, opening in Fall 2026, which will bring new opportunities for research and clinical training. Additionally, the New York Institute of Technology (NYIT) College of Osteopathic Medicine on campus provides students and the local community access to a world-class medical education right here in Jonesboro.



**SCAN FOR
A-STATE &
CAMPUS
LIFE INFO**



HEART FOR GIVING

GETTING INVOLVED

At the heart of our community is a strong spirit of giving back. Jonesboro is home to a variety of local organizations and volunteer opportunities that make it easy to get involved and make a difference. Explore some of the incredible ways you can contribute to our vibrant community below!

NORTHEAST ARKANSAS FOOD BANK

The Food Bank of Northeast Arkansas collects donations from various sources, including the food industry, government, and individuals. Stored in their 56,000-square-foot facility in Jonesboro, food is then distributed to over 140 local partner agencies, including pantries, shelters, and schools, to help those in need across the region.

UNITED WAY OF NORTHEAST ARKANSAS

United Way of Northeast Arkansas brings together local resources to address critical needs and build a sustainable, equitable future for the community. By uniting donors, volunteers, and leaders from health, human services, and government, the organization creates lasting change and improves lives across the region.

ABILITIES UNLIMITED

Abilities Unlimited supports individuals with disabilities across Northeast Arkansas, focusing on abilities rather than disabilities. Serving over 300 individuals in 18 counties, Abilities Unlimited provides personalized care through a variety of programs designed to enhance quality of life.



AMERICAN RED CROSS OF NORTHEAST ARKANSAS

The Arkansas Red Cross has provides disaster relief and emergency services across the state, offering food, shelter, and emotional support to those in need. The organization responds to disasters like tornadoes, floods, and fires, as well as everyday emergencies like house fires. In addition to disaster relief, the Red Cross offers community education, supports military families, and supplies nearly half of the region's blood. Through partnerships, they work to build resilient, prepared communities.

HOPE FOUND OF NEA

Hope Found is dedicated to ending human trafficking by raising awareness, educating communities, and providing vital services to victims and survivors. Their mission is to establish a fully funded survivor restoration campus, offering comprehensive care to those affected by human trafficking and helping them rebuild their lives.

**FOR A COMPLETE LIST OF NONPROFIT ORGANIZATIONS, PLEASE
VISIT WWW.JONESBOROCHAMBER.COM.**

MEET THE AMBASSADORS

Our Always Jonesboro Talent Ambassadors are your local guides for exploring Jonesboro. Each ambassador has a specialty, whether it's outdoor adventures, family fun, golfing, or wellness connections. They are all passionate about Jonesboro and eager to lead you to its hidden gems! To learn more about each ambassador and connect with them, visit AlwaysJonesboro.com or check out [@AlwaysJonesboro](#) on [Instagram](#) or [Facebook](#).



Haley

Outdoor Enthusiast



Atin

Onboarding Afficionado



Amanda

Family Fun



Ryan

'Gould Guru



Phillip

Manufacturing Insider



Allison

Dog Lover



Austin

Fairway Friend



Brook

Healthcare Visionary



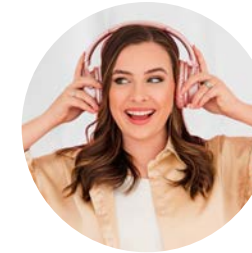
Bethany

Wellness Guide



Pedro

Local Music Scene



Tessah

Connecting Creatives



Kandi

Hotelier of Hospitality



Cortne

Farm Fan



Sarah

Downtown Informant


**Scan for
Ambassador
Information!**

